

Views

The Best at Becksides

Langdale's newly-created timeshare at Becksides is set to become the ultimate word in design, innovative décor and luxurious living accommodation when work is completed in 2003.

The news that Becksides' hotel accommodation is to be converted into two new timeshare properties has been greeted enthusiastically - especially by those who thought Brackens' conversion 18 months ago was to be the very last word in timeshare at Langdale. Becksides' beautiful interiors will compare with Brackens in every way. Their concept in terms of technology and design looks to the future, while the sheer luxury and quality of furnishings and fabrics typify all that Langdale has come to represent.

Becksides occupies a prime position on the Estate beside the Langdale Beck, and the decision to convert it from hotel bedroom accommodation has been taken to meet the constant demand for more top-quality timeshare at Langdale. The building will be divided into two new timeshare units, and our designs have already been granted planning approval by the Lake District National Park Authority.

Becksides, thought to have been a saltpetre store, is one of the original historic Lakeland slate structures which date back two centuries to the years when gunpowder was manufactured on the Estate. The old building will have another important new purpose now, as its solid old stones house Langdale's flagship timeshare, with kitchens, bathrooms

and living space equipped to the best international standards.

The units will either be two-bedroomed, sleeping six, or alternatively three-bedroomed, sleeping eight. The three-bedroomed option is with the addition of a comfortable sleeping loft for extra convenience and flexibility of accommodation.

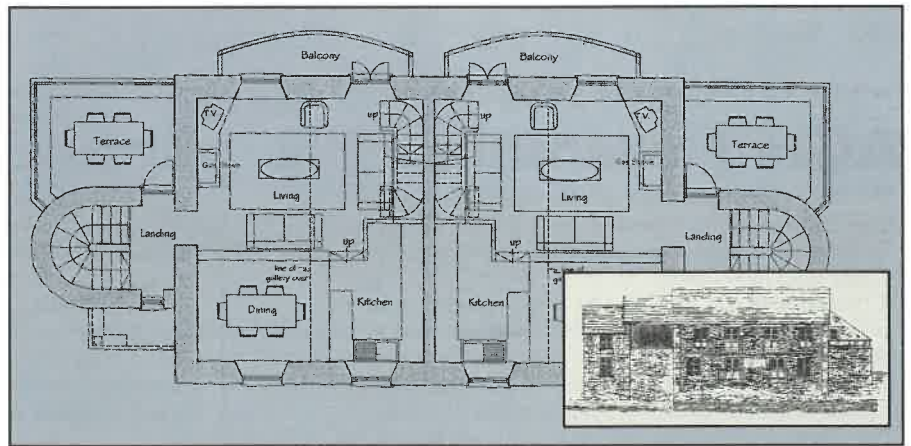
The crystal clear waters of the beck which tumble down from the Langdale fells will have a magnetic appeal for many. Birdwatchers on the Becksides balconies will be rewarded with the occasional sudden dart of a kingfisher, the swoop of a heron, or the sturdy little dippers bobbing about among the rocks. On warm summer days, the open balconies will murmur with the gentle sounds of water while you relax and go with



Rooms with a view.

the flow; on cooler or wetter days, the glassed-in balconies will provide a spectacular and exciting window on nature, with the rush and swirl of the beck below.

Becksides opens a new chapter in Langdale's history. The apartments are on sale now, and the plans can be viewed at www.langdale.co.uk. Put your name down now for a first-refusal option to ensure the week of your choice by contacting the Timeshare Office on 015394 37391.



VIEWS? - IT'S YOURS WE'RE AFTER!

How do you see Langdale in the future? What changes should we make...how could we do better...and what things ought to stay exactly as they are? These are the questions we want to ask in the Census for Langdale - completing it on-line is the most cost-effective way, and should take no more than 40 minutes, costing you approximately 50p - time and money well spent on Langdale's future. As an extra incentive for completing the Census, you'll be automatically entered in a prize draw to win one week's annual management fee - a reward worth a considerable amount, which indicates how seriously we take the views of our stakeholders.

What do you think of refurbishment and facilities on the Estate? What are your views on our exchange arrangements? These are the sort of questions we're asking, easily answered by ticking a box. Please try to fill in the Census on-line - it's not hard. However, if you really can't, (because the kids aren't around to show you how to do it!) just ring Lynette Berry on 015394 38002 and we'll send you a paper copy and enter it on-line for you.

Langdale needs driving - but don't be a backseat passenger - tell us up front where we should go. The deadline for completion is 8th Nov, and you will find the Census on www.langdale.co.uk/census/

LANGDALE ON-SITE

Langdale's website, www.langdale.co.uk is having a makeover - cool, relaxing colours, easy to read graphics, and straightforward, informative descriptions all providing a perfect introduction to Langdale's extensive facilities. Looking down on the Estate from the surrounding hills, it's hard to pinpoint its exact location, so well does it blend in with the surrounding valley - but newcomers visiting www.langdale.co.uk will discover 65 Hotel bedrooms, 98 properties sleeping from four to eight people and one of the best-equipped country clubs in the North of England. Webmaster Nigel Harper is responsible for the website changes, but it's an on-going job because the site never stays the same for very long - old features are always making way for new ideas and priorities.

Nigel, meanwhile, is continuing to incorporate the best suggestions arising from the recent Opinion Taker website questionnaire to update the site. "It will have a brighter, fresher feel, using different shades of light green," Nigel said. "It will handle images better to make navigation easier, so pages will load more quickly. The database of pictures for self-catering and the Hotel is being expanded and already includes every lodge and apartment."

A secure on-line payment facility may be introduced soon, to enable on-line shoppers to pay for their Langdale merchandise in the most convenient way. Shoppers will find many items including Langdale logo'd polo shirts, fleece gilets, L'al Larry sheep

doorstops, keyrings, cuddly toys and sheepdogs, plus a selection of walking and climbing books by Langdale authors, Bill Birkett and Tom Lawton, which make ideal Christmas gifts for Lakes-loving friends.

The website's children's section, with its games and card tricks will be extended to include a series of walks specially created with the young in mind. Another fun arrival will be an on-line Langdale puzzle. This uses new software to download Lakeland scenes, which break up into jigsaw puzzle pieces for you to piece back together on screen.

Tell us where to go!

The latest Opinion Taker wants to find out where in the world people would most like to buy timeshare weeks. Tick the subscribe box to receive an Opinion Taker questionnaire by email. The responses we receive will help Langdale On-Line to look for new resorts.

Tony Richard's daily webcam window on the Lakes always includes the latest weather phenomena like mist and clouds, and you can see a selection of his most recent shots by visiting his website from the link on our front page. A selection of Tony's pictures are also downloadable as calendar wallpapers and screensavers.

Favourites

If you vote before November, it's not too late to take part in our latest 'Favourites' poll - a 'Pop of the Tops' to find your favourite



Lakeland summit. The person whose summit nomination attracts the greatest number of votes wins a two-night break, dinner, bed and breakfast - so enter your summit at www.langdale.co.uk. Pick a memorable name - there's no shortage: Maiden Moor, Ill Bell, Red Screes or St Sunday Crag; Glaramara or Kidsty Pike. Great Cockup's in...but there's still Little Cockup! You'll feel on top of the world if your summit wins a free weekend - just go on-line now and make your nomination. If your mountain has already been nominated you can still win a "Dining With A Difference" holiday, because, by voting, your email address will automatically be entered into a prize draw.

AGM November 2002

The AGM for shareholders of Langdale Owners PLC will take place on Sunday 24th November 2002 at 11am, followed at 2pm by the AGM of the Owners' Club Committee, at Longleat Forest Center Parcs in Wiltshire.

A Dinner Party will be hosted by Directors on Saturday evening and the weekend could be extended to include a visit to Longleat House (guided tours at set times, 11am-3.30pm) or some time spent in the beautiful city of Bath with its elegant pump rooms, Roman baths, and stylish shopping.

The accommodation reserved for us at Center Parcs is full, so if you still wish to book, please ring the Tourist Information Centre in Bath on 01225 477101. A buffet lunch will be served on Sunday at Center Parcs at 12.45pm. To book, ring Lynette Berry on 015394 38002 and send a cheque payable to Langdale Leisure Ltd for £12.50 per person.



Business links

Do you have a business website which you would like to link in with Langdale? We can spread the word, and benefit business for everyone by providing a free reciprocal link to your website through www.langdale.co.uk. Between us all, we could provide a wide variety of goods and services to the discerning; i.e. each other and our web visitors.

Contact Nigel Harper at info@langdale.co.uk to set up a suitable link through our new virtual marketplace, which you will find on the new 'Langdale Partners' page.

Best Buys

Property	Unit	Size	Week	List Price	Asking Price
Windermere	39	Sleeps 6	3	6,399	3,500
Chapel Stile	8	Sleeps 6	6	5,364	3,250
Grasmere	52	Sleeps 4	8	6,279	3,600
Chapel Stile	6	Sleeps 4	36	6,785	3,500
Coniston	24	Sleeps 6	39	12,558	7,900
Coniston	81	Sleeps 6	40	12,558	7,535
Coniston	18	Sleeps 6	44	11,712	6,000
Grasmere	52	Sleeps 4	46	5,916	2,958

The above list represents only a selection of weeks available for sale. The full list is available live online at www.langdale.co.uk/availability/

Hotel Offers...

Walking in good company

October - the time for autumn walks - or why not bike it, bus it or boat it - just don't miss it! The lingering warmth of summer as the leaves turn to gold is the ideal moment to soak up the scenery or go fungus foraging. Breaks from as little as £40 per person per night, bed and breakfast, on selected dates, based on double occupancy.

A Rocketing Success

Langdale, home of gunpowder, is just the place to be on Bonfire Night. Join us for an exciting firework display, lots to eat and loads of fun. Why not book a weekend and stay over till Tuesday 5th November.

Pass The Port

Friday 15th November, the latest Wine Evening features an interesting selection of ports - drinks reception, candlelit dinner, wine and ports all for £30 per person, with bed and breakfast at £50 per person, based on double occupancy.

Only Two Parties left!

Sorry to disappoint would-be partygoers, but Langdale's Party Nights have booked up so fast there are only two dates available, on Friday 6th or Saturday 7th December. Christmas dinner and disco, £29.50 per head, with bed and breakfast at a very special price of £39.50 per person per night, based on double occupancy. This includes full use of the Country Club facilities - swimming pool, exercise studio, sanarium, etc - why not book a Pamper Package before the Party...or buy one as a Christmas present for the boss!

Pamper Packages

Starting at just £35, choose one of the following treatments: a facial, a massage, or a manicure plus all Country Club facilities and lunch on The Terrace. For just £55, enjoy reflexology, or a full body aromatherapy massage, or an Absolve Minceur body treatment, plus all facilities and lunch. The ultimate "Get Away" Pamper Day (£75) gives you 2 hrs 45 mins of treatments, comprising a pedicure, a manicure, back massage and a facial, and the rest of the day to use the pool, sanarium, exercise studio and Club facilities,

plus lunch on the Terrace. Please book on 015394 38053.

Christmas Package

Stuff the turkey? We'll do it for you! Christmas breaks run from Tuesday 24th - Friday 27th December, at £395 per person for 3 nights, based on double occupancy. For full Christmas break details, ask for a brochure.

New Year 2003

Two night New Year breaks run from Tuesday 31st December - Thursday 2nd January 2003 with New Year Gala Dinner, Cabaret and Disco at £345 per person, based on double occupancy. Please ask for a brochure.

A Chile Winter's Night

Keep the New Year spirits up with the Chilean Wine Night on Friday 3rd January, with drinks reception, candlelit dinner and wines for £30 per head, and bed and breakfast for only £50 per person based on double occupancy.



Supreme!

Book up for the Diana Ross Tribute trio, 'Baby Love', on Saturday 11th January - dinner in Purdey's followed by cabaret. £30 per head for dinner and cabaret with bed and breakfast at only £50 per person, based on double occupancy. Bring a bunch of friends - group rates available on accommodation.

Tina Turner Cabaret Night

Tribute singer 'Girl from Nutbush' recreates Tina's star qualities, Saturday 18th January: dinner in Purdey's, followed by entertaining cabaret. Prices as above, group rates available for accommodation.

Haggis and a Wee Dram

Burns Night at Langdale: Saturday 25th January - traditional celebratory meal followed by disco. Dinner and disco £30 per head; bed and breakfast at only £50 per person, based on double occupancy.

Viva España

Friday 7th February 2003 is Spanish Wine Evening: drinks reception, candlelit dinner and lots of full-bodied Spanish vino, all for £30 per head for dinner and wines, plus bed and breakfast at £50 per person, based on double occupancy.

Valentine's Weekend

Romance and luxury - our Valentine's Night is Saturday 15th February and includes romantic candlelit dinner followed by George Michael tribute cabaret, with luxury accommodation. The one night break is just £110 per person for dinner, bed and breakfast or £80 per person for one night bed and breakfast, plus full use of Country Club. For an extra £55 we'll greet your partner with flowers, chocolates, champagne and a teddy bear.

Vive La France!

French Wine Evening, Friday 14th March based on wines from the Rhône and Loire valleys. Drinks reception, candlelit dinner and wines for £30 per head, with bed and breakfast at just £50 per person, based on double occupancy.

A Taste of South Africa

Friday 15th April is the date of our South African Wine Evening - drinks reception, followed by candlelit dinner with food to complement the wines being tasted...all for £30 per head for dinner and wine, and just £50 for bed and breakfast per person, based on double occupancy.

REFURBISHMENT - the latest

A team of contractors spent summer enjoying the great outdoors, on exterior re-decoration of lodges and the first phase of the refurbishment of balconies. Colin Lister and his maintenance team have an extremely busy winter ahead, replacing all existing lodge bedroom furniture with new fittings specially made by Ingrain in solid maple to Colin's specific Langdale design, including beds, wardrobes, cabinets and bedside units, plus new curtains, carpets, bed linen and mattresses. The work will take from 1st November - 31st March to complete. Colin's feeling a wee bit cut up about the new Polycor kitchen work-surfaces. These beautiful surfaces are not made to take hot pans, nor are they for cutting, chopping meat and veg or slicing bread. Instead, please use the chopping boards provided.

Timesharks About!

One of our owners has warned us about Global Communication Intl Inc with offices in Spain and Florida, representing themselves as part of a substantial American company based in Florida. They tell you they have a buyer, take your money and then claim the buyer has withdrawn, offering to try to find another one for you. This company has had the cheek to ask us to confirm owners' details and advise whether the maintenance fees are paid!

Let us know if you hear of any other scams.

INTERNATIONAL YEAR OF THE MOUNTAIN



Events for the International Year of the Mountain (IYM) in the Lake District and Cumbria continue to provide excellent entertainment throughout autumn and winter.

In November Wasdale Mountain Rescue Team and the Wasdale Head Inn's latest debate asks the provocative question: "National Park or Theme Park?", with plenty of scope for good beer and lively banter. Decorating the walls of the Wasdale Head until December are some amazing photographs taken by the mountaineering Abraham brothers in the early 1900s - a fitting place for such a display, being so near to the spot where English climbing began.

At Ambleside, the Armitage Museum's "Man And Mountains" exhibition continues until 3rd January 2003. Visitors walk into a reconstructed Lakeland landscape which illustrates man's impact on the countryside through walking and climbing, mining, quarrying, and farming. Don't miss the Kurt Schwitters paintings and collages also on display, which link with Langdale's own history. It was just opposite the entrance to the Langdale Estate in 1945 that the German refugee and modern art pioneer Kurt Schwitters worked on his famous Merzbarn sculpture inside an old barn at "Cylinders". Schwitters found sanctuary and new inspiration within the old barn walls, and although his Merzbarn sculpture was removed from Cylinders to Newcastle in 1965, you can see 15 paintings which form part of Schwitters' Lake District legacy for the first time at the Armitage in Ambleside.

John Ruskin's Swiss mountain paintings are featured in the Ruskin Museum until 10th November. Conistone also has legendary climbing relics lent by the Fell and Rock Climbing Club, whose early members were pioneers of English rock climbing in the late 1800s. A separate area of the new Museum is devoted to speed ace Donald Campbell's

last tragic attempt on the world water speed record, before his death on Conistone Water.

The Brewery Arts Centre, Kendal, has chosen 'Tourism Through the Ages', from stagecoach to aeroplane as its IYM theme, with help from Arnold Lunn, Thomas Cook and the Swiss Railway archives. From 15-17th November, the Brewery's highly-popular international Kendal Mountain Film Festival weekend will feature films, lectures, seminars, art and entertainment in celebration of mountains. Ring KMFF on 01539 725133.

Rheged, Penrith, is the venue for the highly-acclaimed Helly Hansen National Mountaineering Exhibition, which explores the histories and exploits of Mallory and Irving, Tensing and Hillary and many more. There are also daily showings of new mountain films with stunning footage on Rheged's IMAX screen, and "John Ruskin in Switzerland" until December.

The Queen has been among visitors recently touring Carlisle's Tullie House Museum, where a new IYM winter exhibition starts on 26th October. "Wildlife Habitats of Cumbrian Fells" runs till 4th May 2003, and includes an exploration of the environmental issues facing mountain areas, in particular the impact of rock climbing, fell walking, erosion, litter and over-grazing on the Cumbrian fells.

All 13 mountain rescue teams and their 400 volunteers in the Lake District have been taking part in IYM, and to find out more about rescue events, click on the link to Swiss Affair on www.wasdale-mountain-rescue-org.uk on the left hand menu.

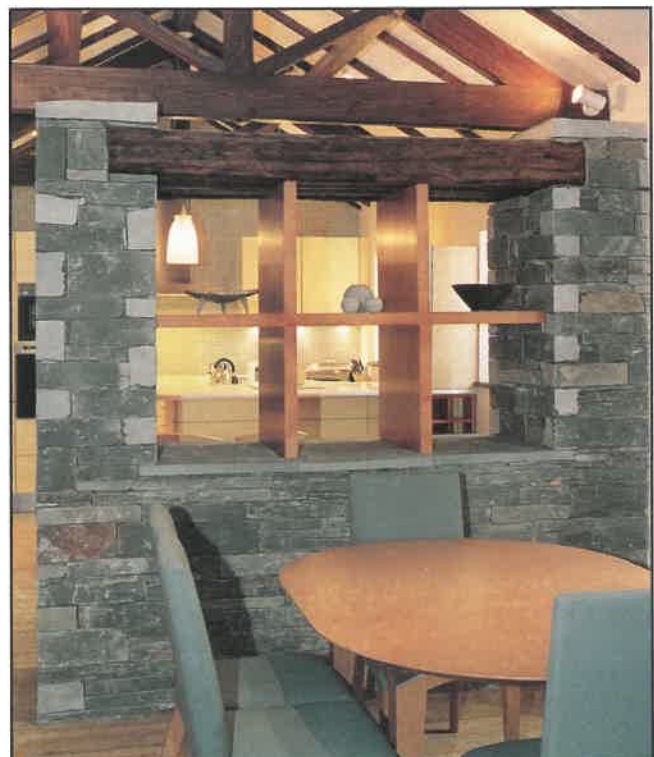
For more details of all events, go to www.mountain-heritage.co.uk or ring Cumbria Tourist Board on 015394 44444 or the British Mountaineering Council on 0870 0104878 or www.thebmc.co.uk

Brackens - The First Bargains

There are only six Brackens' weeks left for sale, and it's Discount Time! With Becksale sales about to be launched, we're feeling generous with Brackens - but you'll have to be quick: phone 015394 37391 now.

Only 18 months ago, Brackens was completely re-built, lavishly equipped and beautifully furnished. No detail was overlooked as this house for the future emerged, set in a unique landscape of the past. Bright, fresh modern design coupled with a gorgeous kitchen, clever use of space and luxurious bathrooms characterised the new Brackens, which has never been discounted before. Now we're offering up to 30% off, to clear the way for sales of the new Becksale units. The following weeks are available:

Bedrooms	Sleeps	Week	List Price	Asking Price	Discount
2	6	2	£10000	£7000	30%
2	6	3	£10000	£7000	30%
2	6	6	£11500	£9000	22%
2	6	16	£16500	£13000	22%
2	6	40	£17000	£14000	20%
2	6	41	£17000	£14000	20%
2	6	47	£10500	£7250	30%



More resorts for Langdale On-Line

Langdale On-Line has signed up two exciting new destinations.

Our energetic search for additions to the selection of top resorts and properties that share the same world-class reputation as Langdale has tracked down new destinations, in London and Madeira. The purpose of www.langdaleonline.co.uk is to build up a small portfolio of stunning locations and properties that would be too expensive to buy and own as second homes, but when purchased as timeshare provide a superb holiday home.

Once purchasers buy into the portfolio, it should be possible, in about 18 months, to exchange within the system, though that wouldn't be a prime reason for purchasing.

Odessa Wharf is Langdale On-Line's latest property, providing an ideal London base on the banks of the Thames. Odessa Wharf was once stacked high with Russian furs and caviar but has now been made into 14 apartments with a 'floating timeshare' arrangement. Purchasers buy a week to be used in any apartment. The week can be booked like a hotel, to allow maximum flexibility and convenience. A preferential system allows owners to book a particular property for the next four years ahead.

Four apartments overlook the Thames, and the remaining ten properties are built in townhouse style. A public deck looks out over the river to Canary Wharf.

Developed by a Danish company, the Wharf retains its outer structure but the décor of each property has taken its own individual international theme, with fine examples of African ethnic décor and sophisticated Scandinavian designs.

Odessa also has its own local pub and a restaurant. The most direct route to town is by riverbus from the pier, which is a 4-5 minute walk away. The riverbus travels up the Thames past St Paul's and the City to Westminster Pier, the London Eye, and the Houses of Parliament. For tube travellers, a shuttle bus service operates until midnight to the nearest station, with cabs laid on for late night. Langdale's Sales and Marketing Director Fredericka Johns visited Odessa recently: "It's the best of both worlds, with all the 'buzz' of city life, yet it's also quiet and peaceful. For people who like to visit London once a year or so, it's ideal for shopping and sightseeing, or to take in a show or two, and the décor is stunning."

The latest sun-seekers' addition to Langdale On-Line is Madeira Regency Palace, eagerly-awaited by all who love this unique paradise. Flowers, fine food, fresh fish, fruit and fabulous weather make Madeira an all-year-round resort where the thermometer hovers around a temperate 80°F. Whatever season, it's never too hot or too cold, which is ideal for walking the famous Levada irrigation channels which cling to Madeira's terraced hillsides.



Cool, stylish elegance characterises the accommodation at Madeira Regency Palace, which can be viewed in detail on the website.

Langdale On-Line's first UK property was Auchrannie, former home of the Dowager Duchess of Hamilton on the Isle of Arran. Seven golf courses, plus walking, sea angling, trout and salmon fishing, cycling, horse-riding and paragliding provide plenty to do, and the two and three bedroom lodges sleep up to eight with superb décor and fittings.

Tuscany was our first new European destination. Converted from the ruins of a 14th century village, Borgo di Vagli's 17 properties are surrounded by rolling hills, forests, lakes, gorges, waterfalls and mountains. Original wooden beams and white marble mosaic floors, plus satellite TV, two pools, 15 sun terraces, a Trattoria and minimarket make Borgo a popular choice. Nearby activities include golf, tennis, boating,

wind surfing, canoeing and water skiing, with Cortona, Florence, Siena, Arezzo or Rome all possible day destinations.

Frantoio del Bartolomei, an old water-powered olive oil mill, is the other Tuscan development, nestling in its own estate of woodland and olives. Frantoio lies in 'maremma' country close to the coast, where jagged peaks and marble mountains meet the sea. Three ancient buildings are scheduled to become spacious, luxurious accommodation with a swimming pool and glorious views. From Frantoio you can choose a beach or busy city, a medieval village or a woodland walk all within easy distance, and Frantoio is also within easy reach of Pisa, Lucca, Florence or Viareggio.

Langdale On-Line's latest search for new resorts is looking at Cornwall and Alicante in Spain as possibilities. Keep an eye on www.langdaleonline.co.uk or subscribe to our email update service.

Metres by the Milestone

Thank you to everyone who sponsored a metre of footpath repair work on Harrison Stickle, by giving a £50 donation in the name of someone special. Some people chose to mark a personal milestone in life - one person had four metres as a retirement gift, and some have bought a metre or two in honour of a new grandchild who will soon be toddling up the fells. Others have purchased metres in memory of loved ones, whose names are then inscribed in our Memorial Book.

The Lake District Tourism and Conservation Partnership, who co-ordinate Langdale's 'Our Man At The Top' fund-raising with the National Trust, report that 90% of the first phase of work on Harrison Stickle has been completed. This included the repair and

realignment of the undesignated path which leads to the summit. Volunteer groups then helped to landscape the area, and Our Man is coming back down to earth for the winter, working on repairs around Rossett and Dungeon Ghylls, in Great Langdale. Next summer, Pete Entwistle and the team will be back up the Pikes to continue the work on Harrison Combe.

The Art of Fundraising

Local artist Tony Pearce has presented a very fine watercolour painting of Harrison Stickle to Langdale, to help raise more funds for this project. Tony's wife, Sasima, is the National Trust's Regional Fundraising Co-ordinator and last year, when she was looking for an illustration of Harrison Stickle to publicise

the project, she asked Tony to help. He responded by producing such a beautiful painting that it was decided to auction the work. Tony, who works as a public relations and communications officer for the Lake District National Park Authority, paints in his spare time, and has had work selected for exhibition by the Lake Artists' Society. "Harrison Stickle" is currently on display at Langdale in the link corridor between Hotel Reception and the Country Club.

Your donations to conservation work through the Lake District Tourism and Conservation Partnership have now reached a grand total of £71,996.

Holidays - on rations

It's amazing how historic little gems of Langdale's past keep popping up in unlikely places. The latest find was made by Dave Allen, a member of Langdale's Maintenance staff, who was rummaging through a box of postcards at Glasson Dock, near Lancaster, when he came across an old brochure for the Langdale Estate.

The brochure was undated, but its message of post-war rationing narrows it down to about 1947: "The continued rationing of towels and soap compels us to ask all clients to bring their own....We shall greatly appreciate the helpful co-operation of all in such service as cleaning of shoes, making beds, and keeping bedrooms tidy..."

Although Langdale seemed a world away from the bomb sites of post-war Britain, austerity was a reality for all. "At the present time, shortage of staff and the difficulties of carrying out repairs and replacements to buildings and equipment make it impossible for us to maintain the same high standard as that on which we have prided ourselves in the past - but, like everyone else, we are hoping that the situation will improve. Meanwhile our old friends will appreciate the position and make allowance for our difficulties..."

A week at the Pillar Hotel cost seven guineas, which would be the equivalent of about £7.40 or £1.10 a day. The Gateway and Becksides Annexe were a little cheaper, and a Cabin by the tarn was £4.25 a week or about 60p a day.

"Ration Books or Emergency Cards must be brought by all guests staying three or more nights. If Tea and Points Coupons are cancelled on the cards the books should also be brought...."

Becksides, which "derives its name from its delightful position on the side of the Langdale Beck" served as an annexe to the Hotel; the Pillar was described as a building of unique and distinctive design with modern furnishings and equipment. Private suites were available with communicating sun balcony, comprising bedroom, sitting-room and bathroom. Hot and cold water was provided in most rooms, and discriminating visitors would "appreciate the charming setting and artistic decorations and furnishings."

The dining-room in the Pillar had large folding windows to "admit the maximum amount of fresh air and sunlight" and the Sun Lounge boasted a Bluthner grand piano.

The Langdale Estate, opened in 1933, at first comprised a "small first-class hotel and annexe, a guest-house and sleeping-cabins - all situated amidst 25 acres of private grounds in one of Lakeland's loveliest valleys." The Estate had quickly established its reputation among select clientele: "Each year brings an ever-widening circle of enthusiastic friends and it is mainly on their recommendation that new visitors come to us, as the Estate has never been widely advertised. It is not our intention that it should become the resort of the undiscerning, but rather that it should be the rendezvous of those who appreciate its inherent charm and peaceful, friendly atmosphere."

Fifty-five years later - and the sentiment's the same!

Triple Gold for Langdale

We're delighted that all the time and money spent refurbishing Chapel Stile has paid off handsomely. The apartments' makeovers included new dining room furniture and kitchens, and they have now regained the highly-accredited RCI Gold Crown award. This means that all three Langdale properties are once again Gold Crown status.

Purdey's - with pleasure



Hotelier and lodge owner, Graham Vine MHCIMA, enjoyed his recent meal in Purdey's Restaurant so much, he wrote to congratulate us:

"We have been coming to Langdale for about ten years now and I would say that we have never had as good a meal in Purdey's as we had tonight. In fact, as a qualified hotelier now working in France, where invitations to 4 and 5-star hotels are routine, I cannot recall when I have had a better meal. Please pass my thanks and congratulations to all of your food and beverage team.

I would most certainly recommend my fellow lodge owners who might have been less than totally enthusiastic about Purdey's food in the past to give it another try. If our meal is typical of the current standards I am sure that they will not be disappointed."

Anomalies

Anomaly bargains this coming winter will fall after New Year 2003, with some tempting breaks available to extend your New Year holiday.

Due to fixed arrival dates for Christmas and New Year there are always a few days rental to spare at knock-down prices. These represent probably the best value in accommodation at any time, any place, at Langdale. This year the majority fall after New Year, from 5-12th January 2003. Lodge owners have taken their pick of anomalies so the remaining bargain nights are now available to all - a minimum 2 nights unless extending your existing holiday.

Grasmere Lodge	1 bed sleeps 4	£70.00 per night
Coniston Lodge	2 bed sleeps 6	£85.00 per night
Windermere Lodge	2 bed sleeps 6	£90.00 per night
Ullswater Lodge	3 bed sleeps 8	£95.00 per night
Elterwater Hall	2 bed sleeps 6	£90.00 per night
Elterwater Cottage	1 bed sleeps 4	£70.00 per night
Chapel Stile	1 bed sleeps 4	£65.00 per night
	2 bed sleeps 6	£80.00 per night
	3 bed sleeps 8	£90.00 per night

Minimum number of nights 2, unless extending.

Jubilee - and all that

As the nation celebrated the Queen's Golden Jubilee earlier this year, Langdale owner Meg Hoggarth from Yarm, North Yorkshire, idly turned over the pages of her 1952 diary and wondered where she had been on that day 50 years before.

To Meg's amazement, she found it was Langdale:

"I've just dug out my 1952 diary and am greatly surprised to read that 50 years ago, on 1st June 1952, I visited the Langdale Estate with my parents," she writes. "They had come to see my father's cousin, Frank Whittle and his wife Nora, who were managing the Estate as a Holiday Park. (I wonder who actually owned it then - can anyone tell me?)

"We had travelled by car from

Chester-le-Street, near Durham, and had brewed up the proverbial cup of tea on a small primus stove in high winds beside Ullswater. I remember being impressed with its simple beauty and peaceful tranquillity. Then all the family was treated to a fine meal in the Pillar Hotel (now the Gatehouse? Or the Fellside studios?) Later, my twin sister Elisabeth came to stay in the tiny cabin (still there by the river) and to swim in the tarn - no heated swimming pool then!

Little did I know that I and my family would go on enjoying Langdale - different now but still lovely - for so many more years. Long may it continue!"

Meg Hoggarth (Owner, two weeks in Lodge 53.)



A Tough Tackle!

The Wooden Spoon, British rugby's charity, (motto: 'The Wooden Spoon Stirs Smiles') came back to Langdale this summer.

Wooden Spoon teams have raised over £3m for UK children in the past decade, and once again chose the Langdale Hotel as a base for their annual major fund-raising event.

Wooden Spoon's Ford Great Lakeland Challenge is a tough course which includes canoeing eleven miles up Windermere, England's longest lake; then a 26 mile cycle over the precipitous hairpin bends of Wrynose and Hard Knott passes, before a tough ascent of Scafell, 3,000ft up England's highest mountain. In 2002, a total of 19 teams raised an amazing £126,881.00 towards Wooden Spoon projects up and down the country. The major sponsors were Ford Motor Company, Groupama, who insure the challenge, Karrimor who provide the clothing, and Panavision and Audiolink who loan the radios. This year many of the teams took advantage of free party nights made by Pizza Express to help boost their funds. Bioforce sponsored the massage team, and Science in Sport helped with a range of sports nutrition products.

Worth a Try?

Try beating England's fittest rugby players! The fastest time for all three sections was 7 hours 45 minutes, the fastest Windermere canoe time was 2 hours 1 minute and the fastest time for cycling the Passes was 2 hours 15 minutes. The winning ascent time was 2 hours 49 minutes. The first ladies arrived home in just over 11 hours and former Rugby Captain Bill Beaumont was in the winning team for the 'prettiest in the car park' best-dressed vehicle award! The last team home completed the extraordinary course in 11 hours 9 minutes, thus receiving the fabled Wooden Spoon.

"Many thanks for all your help once again, the organisation from your end was superb," wrote Challenge Co-Ordinator Matt Armitage to Kath Morton in Hotel Sales. "I know we're probably not the easiest group to work with but you and the whole staff make our job so much easier. Once again, the teams were very impressed with the venue, accommodation and catering and I look forward to speaking to you soon about next year! Please pass on our special thanks to Jason and his team who coped with us admirably."

The Langdale Estate

- Formerly Elterwater Gunpowder Company

One of the things that makes the Langdale Estate unique is its extraordinary history as one of the most "desperately dangerous" places in England. This colourful history is detailed in a fascinating new book "The Gunpowder Mills of Cumbria" by Ian Tyler, and its Langdale chapters make compulsive reading for anyone interested in the history of the Estate.

It's strange to think that a place now associated with quiet enjoyment, luxury and fun was once one of the toughest industrial sites which even witnessed death and disaster in the production of its precious black powder. Among its customers were the Navy, African mining companies and English quarries and mines. The documented history is well illustrated with a map of the Estate, old photographs and tales of explosions and mayhem. Ian also paints a colourful picture of village life in Elterwater and Chapel Stile just a century ago.

"Langdale's exclusive facilities and excellent restaurant are strange bedfellows indeed for the old inhabitants, but the architect has done his job well in retaining and rebuilding some of the leats and waterways, even to the extent of making features of numerous stone runners whereas in other places such features have been destroyed and lost forever...there has been restoration of one of the mills and Hobson's Tarn is still there, as is Kennel Corner complete with the old stone kennels..." (which housed the Directors' pack of hunting hounds) - Ian Tyler.

"The Gunpowder Mills of Cumbria", ISBN 0 9523028 8 8, is published by Blue Rock Publications at Threlkeld Mining Museum, Keswick.

The book is available at £17.99 from Country Club Reception or can be ordered on-line or through bookshops.



Relic of Gunpowder days.

FROM DAY ONE - 1981!

Maintenance man Roger Allum, who retires this autumn, is the very last of the original staff who worked at Langdale from the very beginning. Roger remembers that memorable day only too well: his very first job was to try and make Langdale's only office in the Fellside annexe look respectable, with a quick coat of paint: "I thought I'd have a look and see what was happening on the Estate - and I'm still here, 21 years later!"

Roger came to live at Langdale exhausted and ready to retire, having just spent seven years designing and building his own house completely from scratch, from

footings to roof. It proved a good training for what lay ahead:

"It was fantastic - Langdale was being built around us as we stood there; the lodges started to arrive on the back of lorries from Norway, accompanied by a team of Norwegians to show us how to put them up. We put Lodge 44 up first and it took a team of us just seven days to build it and get the roof on - a job which I'd taken seven years to do! Then the furniture arrived in trucks from Germany, and we stored it in the Barn at Elterwater which is now a timeshare.

"You see lodge owners coming back, year after year and some have become good friends. I thought at first there would be lots of exchanges and strangers on the Estate, but it never happened. Our lodge owners love Langdale so much, some have bought two or three lodge weeks and just keep coming back. It's a nice thing when they say 'It's looking great!' We must be doing our job right if they're still happy after 21 years!"

Roger, who used to work near London as a contractor for the Gas Board, has never regretted his move to Langdale: "I wouldn't want to live on site, but what could be nicer than living in Langdale and walking to work just up the road - then leaving it all behind at the end of the day." While out on the Estate,



Artistic Casey's drawing of her Dad.

Roger enjoys the visiting wildlife: "It's there for all to see, but people don't look up often enough. I often see the buzzards or a heron or kingfisher on the beck." It was Roger's daughter Casey whose observant notes and drawings about Langdale's red squirrels provided Views readers with a wonderful insight into nature on the Estate.

Roger is leaving Langdale Leisure this autumn to make another attempt at retirement - which is unlikely to work, given that his wife Sue runs a busy management training company which could do with Roger's practical helping hand in the office: "She'll probably work me harder than ever!"



Roger (pictured centre) enjoying his retirement party on Windermere.

Advertisement for: Langdale Walking Holidays

Walking in the High Pyrenees
7-14 July 2003

www.langdaleholidays.co.uk

Please contact us if you would like to receive a copy of our latest newsletter or brochures on any of our holidays.

Destinations for 2003 include:

- 30 Dec 2002 - 6 Jan - New Year in Madeira
- 27 Feb-7 Mar - Egypt and the Nile
- 7-23 May - Arizona and Utah
- 19-26 May - Drome Provencale, France
- 13-16 June - Weekend in the Cotswolds
- 20-27 June - Ireland's Dingle Peninsula
- 7-14 July - Pyrenees
- 8-13 Sep - Tresco
- 8-21 Sep - Peru and Bolivia
- 26-28 Sep - Lake District Weekend, Langdale
- 7-14 Oct - Crete
- 12-19 Oct - Marrakech and the High Atlas
- 2-9 Nov - Jordan Adventure

Our next visit to New Zealand is planned for 18 Jan - 13 Feb 2004

interested?
Please contact us on 01539 735108
Langdale Walking Holidays
Helsington Laithes Cottage,
Helsington Laithes,
Kendal, Cumbria LA9 5RJ
email: info@langdaleholidays.co.uk